

SaferFarm.org – Farm Hazard Analysis Tool

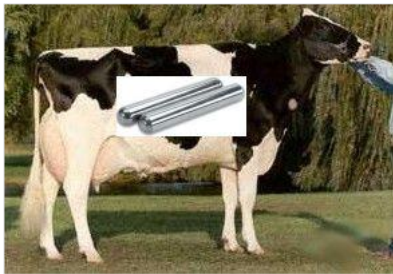
Animals/Livestock

Livestock Identification

Least Protection

1. No animal identification used.
2. State Department of Agriculture ear tag, or conventional ear tag with owner's representative or another party's paper recorded data.
3. Non-RFID ear tag, tattoo, or heat brand ID with owner recorded electronic record storage data.
4. Radio frequency electronic ear tag (RFID) device with computer data storage.
5. Rumen bolus radio frequency identification device (RFID) with computer data storage.

Most Protection



Item:	Item:	Item:	Item:	Item:
<input type="radio"/> O1	<input type="radio"/> O1	<input type="radio"/> O1	<input type="radio"/> O1	<input type="radio"/> O1
<input type="radio"/> O2	<input type="radio"/> O2	<input type="radio"/> O2	<input type="radio"/> O2	<input type="radio"/> O2
<input type="radio"/> O3	<input type="radio"/> O3	<input type="radio"/> O3	<input type="radio"/> O3	<input type="radio"/> O3
<input type="radio"/> O4	<input type="radio"/> O4	<input type="radio"/> O4	<input type="radio"/> O4	<input type="radio"/> O4
<input type="radio"/> O5	<input type="radio"/> O5	<input type="radio"/> O5	<input type="radio"/> O5	<input type="radio"/> O5

Farm: _____

Inspector: _____

Date: _____